

### General

An all new version 4.0 of RouteWarePRO delivers major new features and flexibility to the Systems Professional providing a fully functional Control & Monitor software GUI. The user can custom tailor the GUI to suit individual needs and tastes for nearly any USC hardware installation.



Within minutes, you can install the software and start controlling a USC switching system remotely. The user can customize the GUI on the fly, or by editing simple text files. Screen colors, input and output channel designations, panel names and labels can be easily added or changed too, or even the title displayed at the top of the GUI. Examples are provided on the installation media and videos are on our website.

The user can also view existing connections on the unit under control by selecting the Connections Screen (third tab). Here, the user can view the numbered channels or the user's text designations. A total of six screens assist the user in managing their switching assets in a clean and efficient graphical interface.

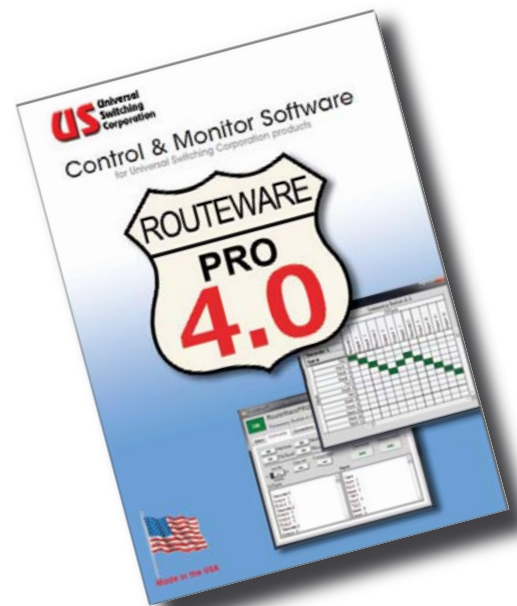
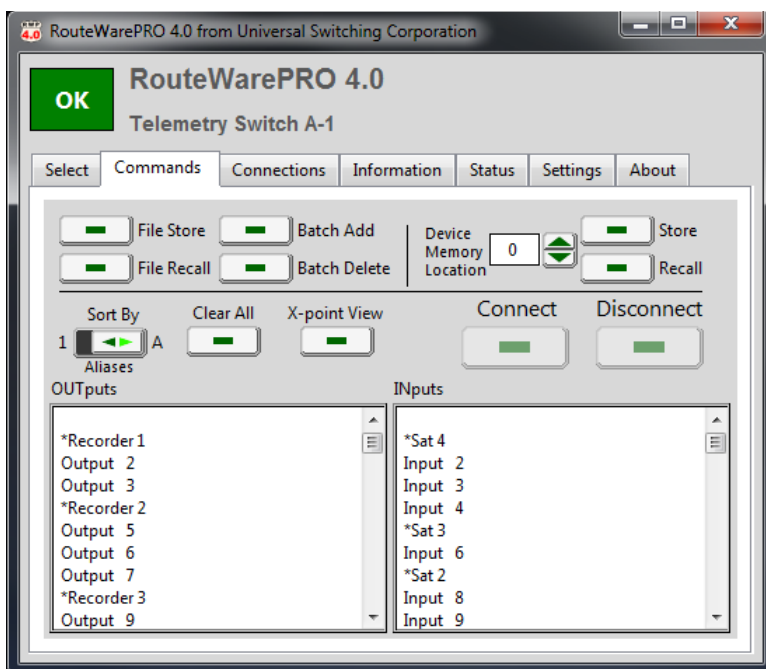
### Features

- Includes support for Ethernet, GPIB and Serial
- On-the-fly user configurable I/O names and designations
- Easy and quick program setup with InstallShield
- Control most standard switching products from USC
- User configurable screen colors and labels
- Store and recall configurations on the fly
- Informative real time Status and Information screens
- Control multiple units with a simple click
- Log all actions for archiving
- For flexible applications, there is a USB-Key Fob version

### New for Version 4.0

- Re-engineered look and feel for elegant flow and improved functionality
- Built-in real-time visual crosspoint connectivity window
- Fully updated for Windows 8.1/8/7 compatibility
- Embedded activity log viewer with export options
- Auto-discovery of network attached USC hardware
- Multiple output (or input) selection for streamlined signal fan-out (or fan-in)
- Sort inputs and outputs by I/O number or by user channel/port alias names
- Overhauled Settings tab with expanded user controls such as defining matrix type
- Fully scalable user windows for easy viewing of larger configurations
- New integrated screen color picker to customize "panels"

### Commands Tab

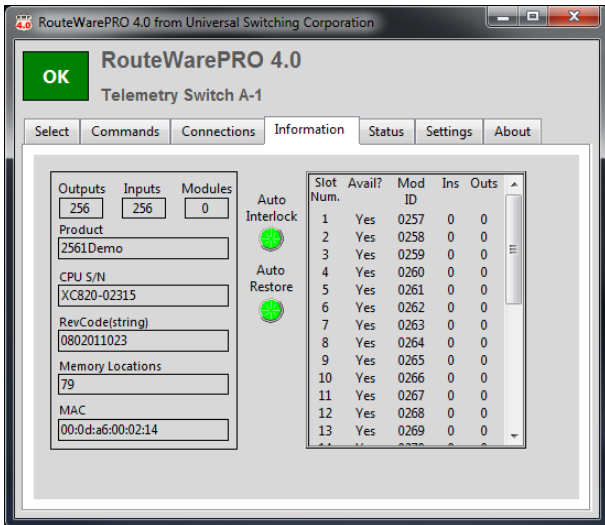


At the Commands Screen, the user can choose an input and an output, then pick an action (Connect, Disconnect, or Query), or Store and Recall complete configurations from the unit's RAM. Channel port names can be edited here too.

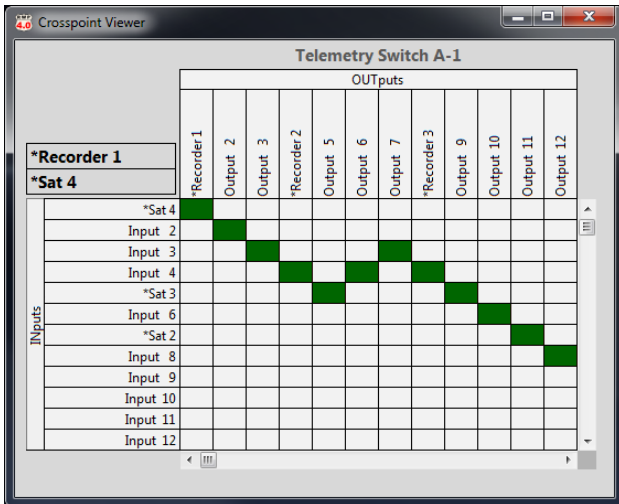
## Multiple Screens

The RouteWare GUI provides six tabbed screens to control and monitor both the switching configuration and the remote interfaces, plus error and troubleshooting screens.

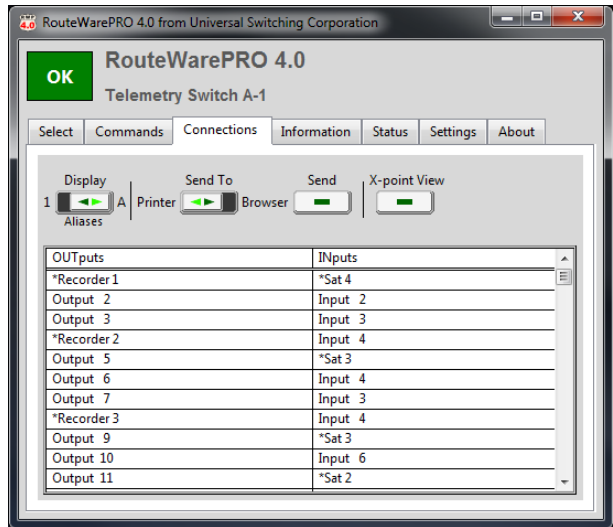
### Information Tab



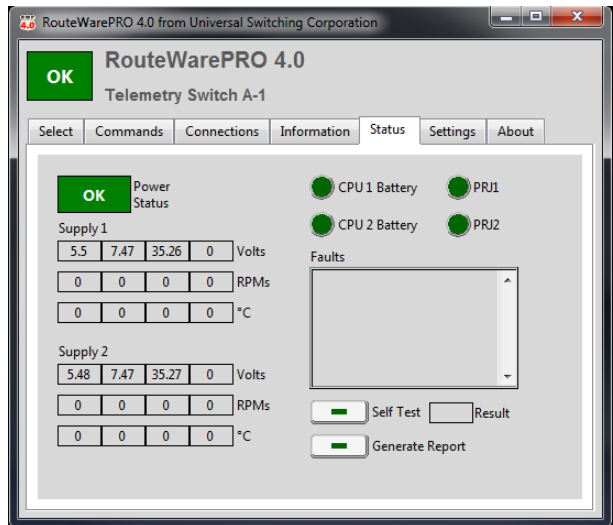
### Crosspoint Viewing Window



### Connections Tab



### Status Tab



### Control Format Compatibility

Series G2 with C710, C720, C820 and C3 type CPUs

### Control Limits

Number of inputs . . . . .1 to 1024  
 Number of outputs . . . . .1 to 1024  
 Number of "levels" . . . . .1 to 16

### System Requirements

PC with a Pentium 500MHz or higher processor  
 Microsoft W8.1, W8.0 and W7 operating systems  
 128MBytes RAM minimum (256MBytes recommended)  
 Hard disk space, 3000Meg minimum  
 CD-ROM drive needed  
 800x600 or higher resolution monitor  
 Microsoft mouse or compatible pointing device

Universal Switching's policy is one of continuous development, and consequently the company reserves the right to vary from the descriptions and specifications shown in this publication.